

California Artichoke Advisory Board

Annual Report

2016-2017

The Board 2017-2021

Members

Michael Scattini, President
Dale Huss, Vice President
Ed Mora, Secretary
Francisco Casteneda
Steve Jordan
David Compton
Adrain Zendejas

Alternates

Ryan Kelly
Jeff Percy
Ron Mondo

11402 Merritt St.
P.O. Box 747
Castroville, CA 95012

Tel: 831-633-4411
Fax: 831-633-0215



California Artichoke Advisory Board

In existence since 1960, when growers voted to approve a marketing order and to assess themselves for its activities, the California Artichoke Advisory Board has focused on research, primarily through the Artichoke Research Association, for solutions to the insect and disease problems in artichokes for the past 18 years. Generic promotion is a secondary objective and is mostly performed through the board's website, www.artichokes.org. The marketing order is revisited every 5 years to determine the applicability of the board's performance and its continuance. The next hearing will be held in January 2019.

California Artichoke Advisory Board

2016-2017

Budget

Income	Budget	Actual	Balance
Carryover from FY 15-16	90,000	94,367	4,367
Carton Assessment (@.045)	135,000	163,181	28,181
Acreage Assessment (@1.00)	4,500	6,070	1,570
Other		683	142
Total	229,500	264,302	34,802
Expenditures			
Management	38,000	38,000	0
Financial & Compliance Audits	7,000	7,625	625
Office/Computer Equipment	6,000	4,276	1,724
Insurance	1,300	1,161	139
Telephone	1,800	1,546	253
Postage/Freight	700	510	190
Rent/Utilities	6,000	6,120	120
Travel/Mileage	400	206	194
Promotion	2,500	1,157	1,343
Website/Internet	1,200	1,161	39
Research	105,000	105,000	0
Total Operating Expenses	169,000	166,764*	2,336*
CDFA	21,000	11,647	9,353
Contingency/Reserves	39,400	0	
Total	229,500	178,411	51,089

Year End Balance 85,891

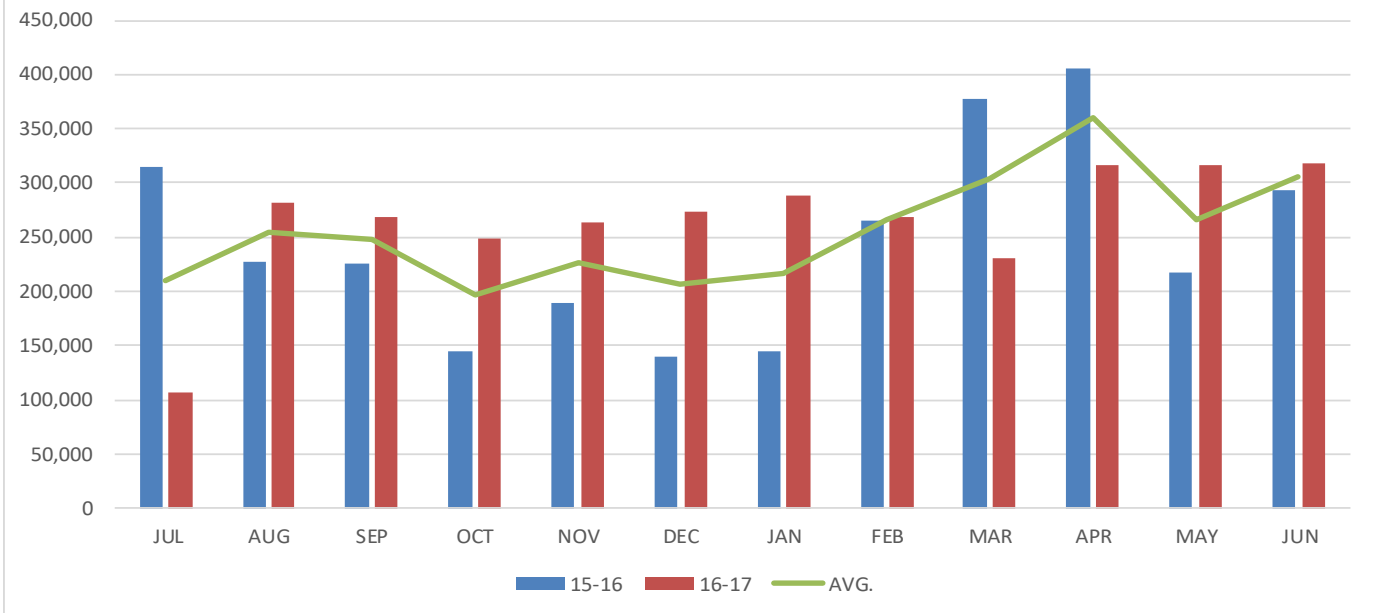
*Totals may not be exact due to rounding

Budget Review

The year ended with a surplus of \$51,089 realized from budget savings and \$85,891 from the actual collected income versus the actual expenditures. All line items except the financial/compliance audit and utilities were under or met budgeted amounts. Overpayment of the financial & compliance audit was credited by the auditors toward the 2017-2018 year. The cost of utilities was under budgeted.

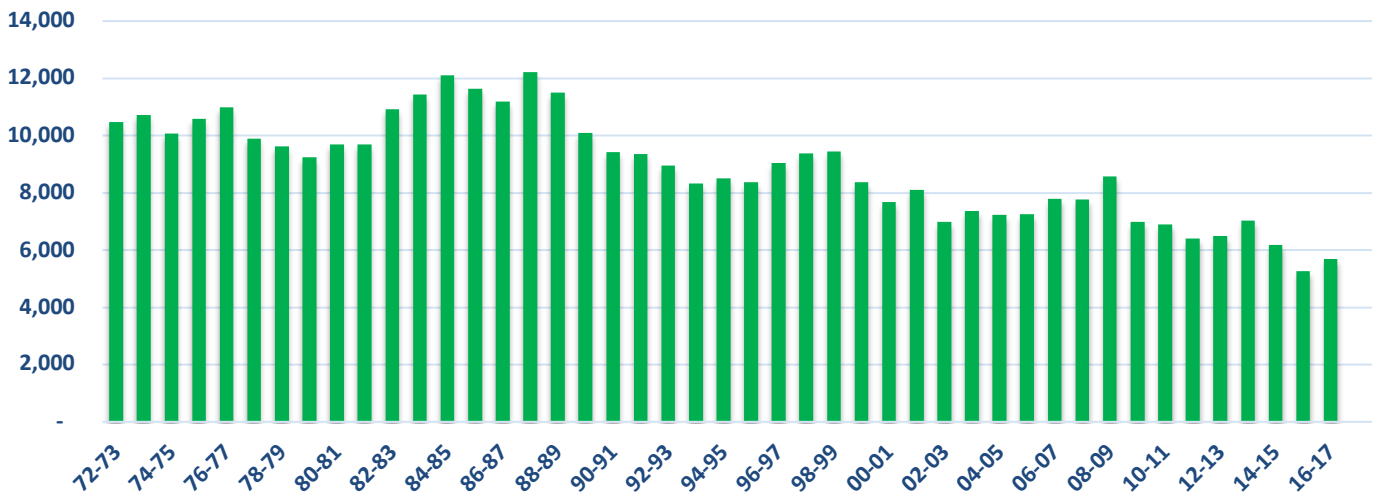
Research accounted for 63% of the actual operating expenditures and management took 28% of actual operating expenditures. Marketing Branch, CDFA performed admirably, completing the year with 45% of its budget remaining in the California Artichoke Advisory Board's coffers.

**Cartons Produced by Month
2015-2016 and 2016-2017
Compared to Average Production by Month**



Total Production 2015-2016: 2,944,409
Total Production 2016-2017: 3,177,029
Average Production 2015-2017: 3,060,719

ACREAGE 1972-2017



The Continuing Quest for Control At the Artichoke Research Association

Insect and Symphlan Control

A field trial of Harvanta, a novel diamide insecticide, was undertaken using Harvanta in low, medium and high rates, comparing it to Radiant and Dimilin for its effectiveness against the artichoke plume moth (APM) in perennial artichokes. Harvanta performed better at controlling infestation at all rates of application than either Dimilin or Radiant and appears to be more effective than all other registered insecticides in controlling APM.

Another field trial was also held to authenticate the degree day model for predicting APM development which was first proposed in 1977 and the new study resulted in confirmation of the original study's conclusions.

An additional study was performed testing the efficacy of various pyrethroids, SNS-PC, & SNS-209 for their adulticide efficacy against APM. Results showed that Perm-up and Asana resulted in 100% kill in 24 hours, while SNS-PC and SNS-209 had no measurable effect.

Taking the same pyrethroids to the field and testing them for control of adult APM, the study applied them by air, crawler-mounted ground sprayer, Gearmore sprayer, and game sprayer. Results indicated that air and crawler mounted ground sprayers were least effective and the Gearmore sprayer most effective. The study also indicated that the pressure per square inch of the applicator was the main factor in its superior efficacy.

Disease Control

A field study testing the efficacy of Pristine, Luna Sensation, Inspire Super, and Quadris Top against botrytis in perennial artichokes was performed in perennial artichokes. Inspire Super proved to be more effective and along with Quadris Top in additional studies provided excellent control of ramularia and powdery mildew. Both Quadris Top and Inspire Super have been registered for use on artichokes.

Extension Activities

Meetings were held throughout the year with artichoke growers and pest control advisors regarding pest problems and possible solutions.

